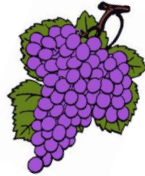


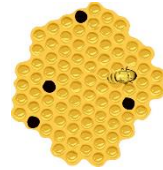
# What We Brew








-  Top Ferment – Light
-  Top Ferment – Dark
-  Bottom Ferment – light
-  Bottom Ferment – Dark
-  Cider (Apple Cider, Perry, etc,)



## Wines



-  Grape
-  Fruit (other than Grape)
-  Mead
-  Sparkling
-  Miscellaneous (Flower, Herbal, etc.)



## Varietals



-  Sodas
-  Fortifieds
-  Liqueurs
-  Vinegars
-  Miscellaneous



## Fermented Foods



-  Fermented Fruits and Vegetables
-  Fermented Meat and Seafood
-  Cheese (both fermented and non-fermented)
-  Fermented Sauces
-  Miscellaneous